

# GROVE®

## A125J



- ▶ 125 ft. (38.1 m) Platform Height
- ▶ Unrestricted 6,273 sq. ft. (583 m<sup>2</sup>) Working Range
- ▶ Over 61 ft. (18.5 m) Of Up and Over Height
- ▶ Over 69 ft. (21.0 m) Of Horizontal Out-reach

## ARTICULATING BOOM WORK PLATFORM



The **A125J**... expanding the boundaries of self-propelled aerial work platforms!!

With its massive 6,273 sq. ft. (583 m<sup>2</sup>) of working area, hydraulically extendible axles, telescopic riser assembly, and a low GVW for ease of transportability, the A125J provides the user with increased productivity, maximum reach and performance all at a reduced cost of ownership.

### Maximum Productivity

The A125J combines three dimensional platform positioning, exceptional maneuverability, and massive unrestricted working range.



- ▶ Over 61 ft. (18.5 m) of up and over height due to the 3 section telescopic riser assembly.
- ▶ 8 ft. (2.4 m) articulating jib with 95° of articulation.
- ▶ True multi-function capability in **both** high and low engine rpm.
- ▶ 600 lb. (272 kg) platform capacity.

### Unbeatable Drive Performance

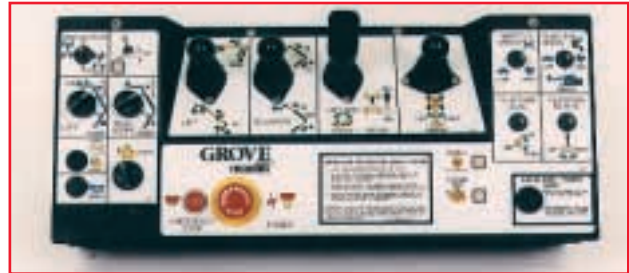
Tough job site conditions are no match for the A125J!



- ▶ Full time four wheel drive.
- ▶ Standard four wheel crab and coordinated steer for unmatched maneuverability.
- ▶ Gradeability \*(theoretical) up to 50%.
- ▶ Rotary flow divider drive system automatically intensifies flow and pressure to the drive wheels with the most traction.
- ▶ Powerful 100 hp (75 kW) Cummins diesel engine.
- ▶ The hydraulically extending axles can be set-up by one person in under 2 minutes.

### Easier to use

The A125J is designed to facilitate operator confidence and training.



- ▶ Universal control box layout offers color coded symbols and text on a high visibility white panel.
- ▶ Smooth proportional controls for drive and boom functions with adjustable ramp-to-zero.
- ▶ Proportional controls are adjustable for individual preference.
- ▶ 15 second timer enable footpedal with enable light.

### Innovative Styling. Greater Serviceability.

Eye catching, yet practical styling combines mechanic friendly features with a bold look.



- ▶ Strategically located access panels are easily removed to provide easy access for routine maintenance.
- ▶ Variable displacement axial piston pump supplies only the pressure and flow needed which eliminates the need for extra valving and hoses.
- ▶ Consolidated hydraulic components provide ease of serviceability.
- ▶ Robust heavy-duty designed unit.

### Standard Features

- ▶ 36 x 96 in. (0.9 x 2.4 m) aluminum platform with swing-gate, inside hand rails and 180° platform rotator
- ▶ 110 VAC receptacle with GFI in the platform
- ▶ All motion and tilt alarms
- ▶ Patented control enable system
- ▶ 360° continuous superstructure rotation
- ▶ 12 volt DC auxiliary power
- ▶ Lifting and tie down lugs
- ▶ Foam-filled tires

### Options

- ▶ Lights package – drive and backup and platform worklights
- ▶ Amber strobe light
- ▶ 2000 watt 110 VAC generator
- ▶ 120 psi air line to platform

## A125J Specifications

### Platform

Working Height	131 ft. (39.9 m)
Platform Height	125 ft. (38.1 m)
Horizontal Reach	
Riser Retracted	69 ft. 8 in. (21.2 m)
Riser Extended	62 ft. 7 in. (19.1 m)
Up and Over Height	
Riser Retracted	34 ft. 3 in. (10.5 m)
Riser Extended	61 ft. 9 in. (18.8 m)
Platform Capacity	500 lb. (227 kg)
Platform Rotation	180 degrees
Jib Length	8 ft. 0 in. (2.4 m)
Jib Articulation	95 degrees

### Dimensions

Platform size (steel)	36 in. x 96 in. (0.9 x 2.4 m)
Overall Height (stowed)	9 ft. 9.5 in. (3.0 m)
Overall Length	39 ft. 4 in. (11.99 m)
Overall Width	
Axles Retracted	8 ft. 6 in. (2.6 m)
Axles Extended	12 ft. 0 in. (3.7 m)
Wheelbase	14 ft. 0 in. (4.27 m)
Ground Clearance	12 in. (0.3 m)

### Power Source

Engine	Cummins 3.9 diesel rated @ 100 HP (75 kW)
Fuel Tank Capacity	45 gal. (170 L)

### Performance

Main Boom Lift Speed	97 sec.
Riser Lift Speed	115 sec.
Telescope out (main boom)	60 sec.
Telescope out (riser assy)	130 sec.
Drive Speed	2.5 mph (4.0 kp/h)
Gradeability *(theoretical)	50%
Turning Radius:	
Axles Retracted (inside)	15 ft. 3 in. (4.66 m)
Axles Extended (inside)	12 ft. 0 in. (3.7 m)
Axles Retracted (outside)	24 ft. 11 in. (7.59 m)
Axles Extended (outside)	28 ft. 6 in. (8.69 m)
Tailswing	
Riser Retracted	0 in.
Riser Extended	3 ft. 8 in. (1.1 m)

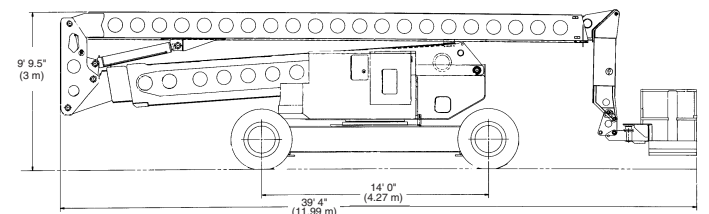
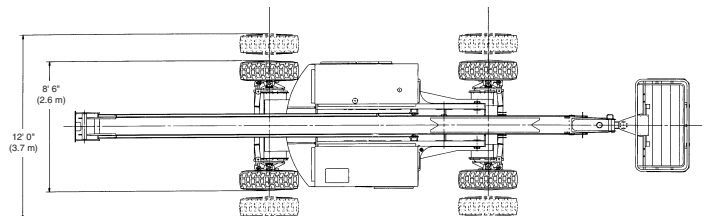
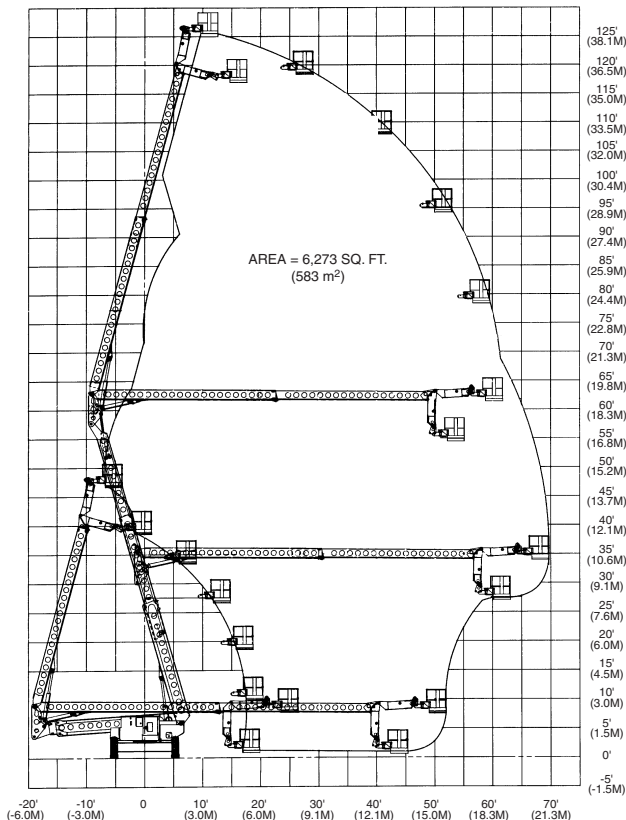
### Hydraulics

Reservoir Capacity	102 gal. (386 L)
Pump Type	Piston
Auxiliary Power	12 VDC

### Shipping Information

Gross Vehicle Weight	47,900 lb. (21,727 kg)
Shipping Cube	3,274 ft. <sup>3</sup> (92.7 m <sup>3</sup> )

\*Published machine gradeability is theoretical. Machine to be in stowed position. Always operate machine on a firm, level surface when elevated.





## Product Protection Plan

**One-year parts warranty**

**One-year labor warranty**

**Seven-year structural warranty**

In addition to cutting-edge equipment and innovative features, Grove Manlift® offers a comprehensive product protection plan. Under the plan, all new Grove Manlift® aerial work platforms are warranted to be free from defects in material and workmanship for one full year. All structural components – including risers, booms, masts, turntables, and frames – are covered for seven years.\* Get the Grove Manlift® Product Protection Plan today!

\*See warranty information for any limitations or restrictions that may apply.

**Grove Worldwide**  
**Grove Worldwide - World Headquarters**  
*Western Hemisphere, Asia/Pacific*  
1565 Buchanan Trail East  
P.O. Box 21  
Shady Grove, Pennsylvania 17256, USA  
Phone: [Int + 1] (717) 597-8121  
Fax: [Int + 1] (717) 593-5303

**Grove Europe Limited\***  
*Europe, Africa, Middle East*  
*Sales & Marketing*  
1 Emperor Way  
Doxford International Business Park  
Sunderland SR3 3XR, England  
Phone: [Int + 44] (191) 515-7253  
Fax: [Int + 44] (191) 564-0442

**Lifetime Customer Support**  
*Western Hemisphere*  
1086 Wayne Avenue  
Chambersburg, Pennsylvania 17201, USA  
Phone: [Int + 1] (717) 263-5100  
Fax: [Int + 1] (717) 263-0404

\*Grove Europe Limited,  
Registered in England, Number 1845126

<http://www.grovetworldwide.com>

Distributed By:

Constant improvement and engineering progress make it necessary that we reserve the right to make specification, equipment, and price changes without notice. Illustrations shown may include optional equipment and accessories and may not include all standard equipment.

GROVE® and GROVE LOGO are registered trademarks of GROVE in the U.S. and/or other countries. Copyright ©2000 GROVE. All rights reserved.