

www.palazzani.it

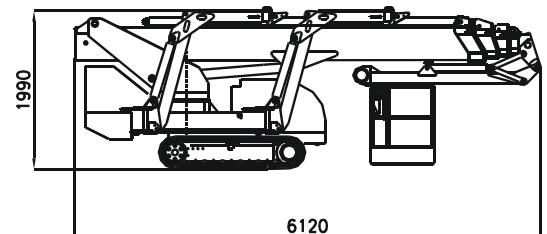
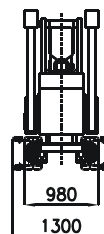
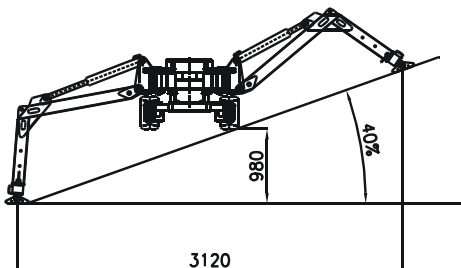
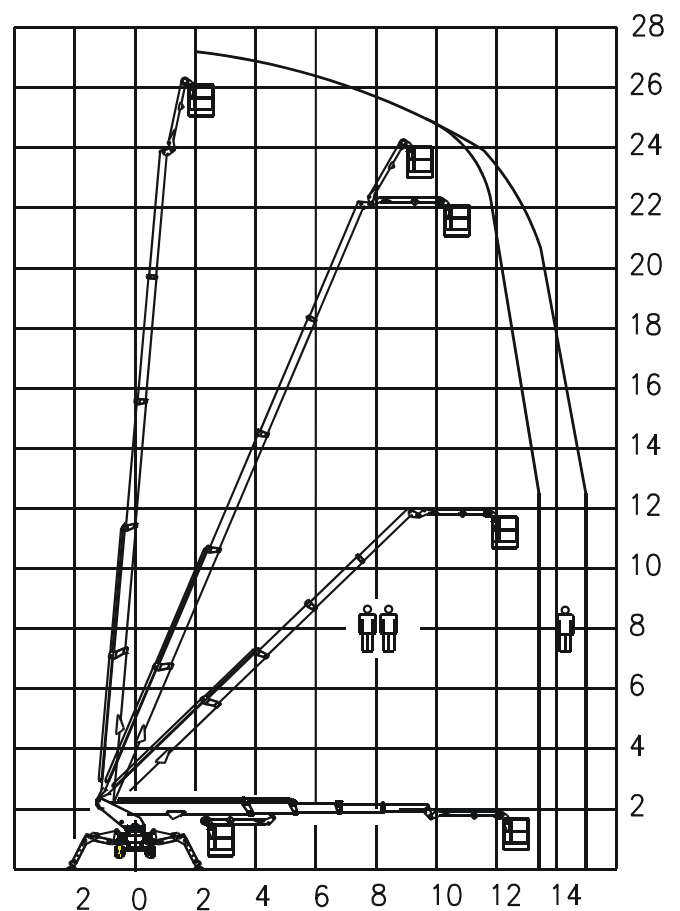
The new **RAGNO** generation

“bi-energy” system : diesel engine & 230 (110) VAC electric motor variable set-up with automatic self-levelling * unrestricted boom rotation under any set-up configuration * automatic outreach limiting device monitoring the cage load and outriggers positions * compact dimensions (199x98 cm) allow access to all areas * lightweight with large rubber tracks giving low surface pressure on soft grounds or delicate flooring hydr. & el. lines protected inside the boom * quick and easy to operate



RAGNO TSJ 27

- > 27M WORKING HEIGHT AND 14 M OUTREACH
- > RETRACTABLE TRACKS FROM 130 TO 98 CM



ALTEZZA MAX	MAX WORK. H	MAX. ARBEITSHÖHE	HAUT. MAXI DE TRAVAIL	27 M
MOTORE DIESEL	DIESEL ENGINE	DIESELMOTOR	MOTEUR DIESEL	14 KW
MOTORE ELETTRICO	EL. MOTOR	ELEKTROMOTOR	MOTEUR ELECTRIQUE	2,2 KW 230VAC
PENDENZA MAX.	MAX. SLOPE	MAX. STEIGFAHIGKEIT	PENTE MAXI	40%
VELOCITA' MAX.	MAX. SPEED	MAX. GESCHWINDIGKEIT	VITESSE MAXI	1,8 KM/H
ROTAZIONE BRACCIO	TURRET SLEWING	DREHTURM SCHWENKEN	ROTATION TOURELLE	400°
NAVICELLA AEREA	WORKING CAGE	ARBEITSKORB	NACELLE	200X80H110 CM
ROTAZIONE NAVICELLA	CAGE ROTATION	KORB SCHWENKEN	ORIENTATION PANIER	90°+ 80°
PORTATA UTILE	SAFE WORK. LOAD	ZULADUNG	CHARGE UTILE	120 - 200 KG
LARGHEZZA CINGOLI	TRACKS WIDTH	RAUPENBREITE	LARGEUR CHENILLES	98 - 130 CM
LUNGHEZZA	STOWED LENGTH	MIN. BAULÄNGE	LONGUEUR	6.120 MM
ALTEZZA	STOWED HEIGHT	MIN. HÖHE	HAUTEUR	1.990 MM
LARGHEZZA MINIMA	MIN. WIDTH	MIN. BREITE	LARGEUR MINI.	980 MM
PESO	WEIGHT	GEWICHT	POIDS	4.600 KG
STABILIZZAZIONE MINIMA	MIN. OUTRIGGER SPREAD	MIN. ABSTÜTZBREITE	STABILISATION MINI.	3.150 MM

Palazzani Industrie SpA

25050 PADERNO F.C. (BS) - ITALIA
 Tel ++ 39 030 6857073 - Fax ++ 39 030 657079
 mail: platforms@palazzani.it
 url: www.palazzani.it

DATI TECNICI PURAMENTE INFORMATIVI E SOGGETTI A VARIAZIONE SENZA PREAVVISO
 TECHNICAL DATA ARE INFORMATIVE ONLY AND CAN CHANGE WITHOUT NOTICE

REF. 022B